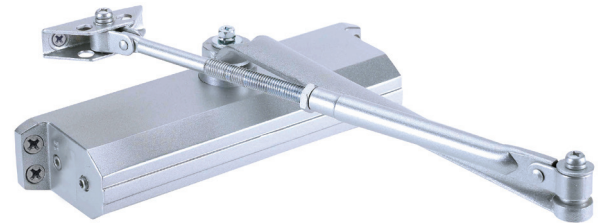
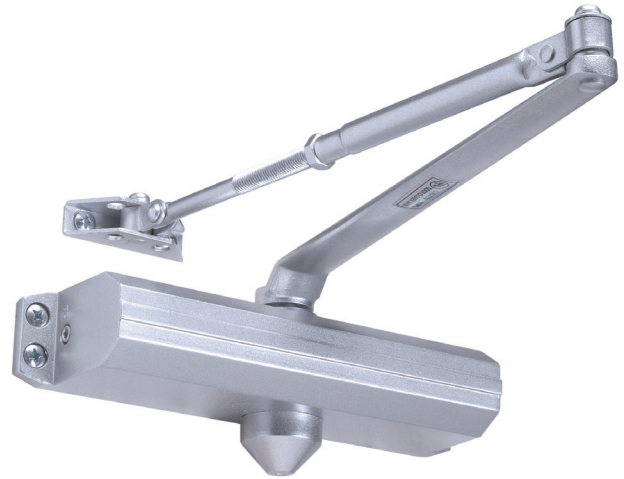




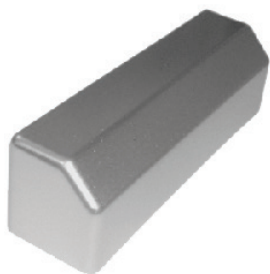
## 600 Series Commercial Grade 1 Door Closer

- **Performance:** Complies with ANSI A156.4, Grade 1, 2 million cycles, UL/ULC listed up to 3 hours fire rated
- **Chassis/Closer:** Cast aluminum
- **Handing:** Non-handed
- **Mounting:** TRI-PACK — regular, top jamb and parallel arm applications.
- **Main Arm:** Forged steel, accommodates reveals up to 3 1/4", adjustable extension arm
- **Spring Power:** 3 - 6 sizes
- **Backcheck:** Adjustable, hydraulic - providing cushioning and preventing uncontrolled door openings.
- **Valves:** Adjustable, independent, non-critical (sweep and latch), consistent closing speeds
- **Fasteners:** Metal screws included for hollow metal and aluminum mounting applications. Wood screws included for wood door mounting applications. Thru-bolts optional.
- **Door Range:** Up to 180 degrees
- **Door Preparation:** 9-1/16" horizontal and 3/4" vertical mounting hole locations (retrofits traditional closer)



**HOLE PATTERN:**  
9-1/16" x 3/4"

Order #	Item #	Finish	List Price
864-0020	12640 BC PA	Aluminium	<b>\$141.67</b>
864-0025	15640 BC PA	Duro	<b>\$157.80</b>



### High Impact Full Plastic Cover for 600 Series

High impact full plastic cover, non-handed.

Order #	Item #	Finish	List Price
864-0021	DC100102	Aluminium	<b>\$7.89</b>
864-0026	DC100103	Duro	<b>\$7.89</b>



**Four Convenient Locations:**

[SouthernLock.com](http://SouthernLock.com)

[sales@SouthernLock.com](mailto:sales@SouthernLock.com)

Main Florida Warehouse: 800.282.2837, Fax: 800.447.2299, PO Box 1980, Pinellas Park, FL 33780

South Florida: 888.780.6071, Fax: 954.943.4211, 1445 SW 6th Ct., Pompano Bch, FL 33069 (Se Habla Espanol)

Atlanta: 877.217.9396, Fax: 770.455.3969, 3627 Clearview Pkwy., Doraville, GA 30340

Charlotte: 888.571.9145, Fax: 704.527.0058, 8200-C Arrowridge Blvd, Charlotte, NC 28273



Facebook.com/SoLock

@SouthernLock