

# 8310 MultiMag®

## Single Mag w/Door Status Sensor, 12/24VDC

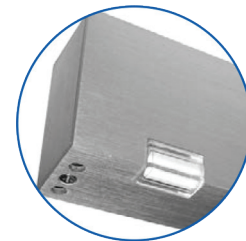
*These hard-working multi-purpose electromagnetic locks enhance building security and install quickly.*

Several standard features make these magnets the "workhorse" of the industry. The adjustable mounting bracket has been enhanced with keyhole mounting to support the magnet's weight during initial installation, freeing the installer's hands to affix the magnet mounting screws. The removable cavity cover offers quick, easy access to wiring.

These models feature a built-in, adjustable time delay with instant unlock and delayed relock (up to 110 seconds), which can be controlled by any standard switching device.

### Applications

- Airports
- Government Facilities
- Healthcare
- Industrial Buildings
- Industrial Enclosures
- Libraries
- Retail
- Healthclubs
- Warehouses



Larger LED Size for Better Visibility (SCS versions only)



### Interior or Perimeter

- Single outswinging doors
- Single inswinging doors (use with Z bracket)

### New Angle Brackets, Filler Bars, Spacers for 8310 =

724-2200 AB01 - 1"x1"x10-1/2", 724-2210 AB03 - 1-1/2"x1-1/4"x10-1/2", 724-2300 FB03 - 1/2"x3/4"x10-1/2", 724-2310 FB04 - 5/8"x3/4"x10-1/2", 724-2400 SP03 - 1/2"x1-1/2"x10-1/2"

- Larger (Right Angled) LED size for better visibility (SCS versions only)
- Built-in time delay (instant release with adjustable relock, programmable from 0-110 seconds)
- Field selectable voltage - 12/24VDC
- MOV surge protection
- No residual magnetism
- Low energy consumption
- Hardened steel armature nut
- Brushed Anodized Aluminum finish
- DSS - Door Status Sensor

Order #	Item #	Price
724-2005	8310 DSS X 28 Single Mag 12/24VDC	\$514.00

NEW PRODUCT • NEW PRODUCT • NEW PRODUCT